

Guests #2

# ESCAPE ROUTES

Benedict Drew invites: Angus Braithwaite, Nicholas Brooks, David Burrows, Ami Clarke, Catriona Clayson, Matt Copson, Vera Karlsson, Rebecca Lennon, Terence McCormack, Heather Phillipson, Laura Smith, Milo Waterfield

Limbo, Substation Project Space, 2 Bilton Square, Margate CT9 1EE  
02-24 August 2014, Fri-Sun 12-5pm or by appointment | Preview 1 August 6-9pm

---

For the *Guests* series, Limbo invites an artist who either lives, works or has worked in Kent to take-on the role of host, and to invite others to collaborate with them on a project of their choosing.

*Guests* does not prescribe the nature of this collaboration, or its outcomes, except that it should be in some way accessible to the public over four consecutive weekends. For *Guests #2*, Limbo approached Whitstable and Margate-based artist **Benedict Drew**, who has invited twelve other artists to work with him.

In the exhibition, called *Escape Routes*, Drew will modify Limbo's gallery, recolouring the walls, darkening the room and making a range of interventions. As in much of his recent work, the altered environment proposes itself as a psychotropic space, seemingly created by an unknown, psychotic, form of authority.

Another recurring theme for Drew is the stability of form in an era of digital mediation. In *Escape Routes*, form is proposed as a mode of entrapment – as though withholding some kind of essence or pure content which has the potential to be extracted. This idea, where 'escape' is considered as the violent separation of form and content, is variously suggested and contested by the works in the show.

---

**Angus Braithwaite** (b. 1984, Cumbria) studied at Newcastle University and the Slade School of Art. Recent solo and group exhibitions include *Trees: Native or Otherwise*, Palagkas, London, 2014; *Buster Keaton and the Logic of Objects* (performance), The Warwick Arts Centre, Warwick, 2013; *The World Turned Upside Down*, Mead Gallery, Warwick, 2013; *The Everything and Nothing Problem*, The Jerwood Space, London, 2013; *We Object, Aid & Abet*, Cambridge, 2013  
[angusbraithwaite.com](http://angusbraithwaite.com)

**Nicholas Brooks** studied at the Slade School of Fine Art (MFA) and Chelsea College of Art (BA). Recent exhibitions include *TTTT*, Jerwood Space, London 2014, *The Zabludowicz Collection Invites*, London 2013, *Young London 2013*, V22, London 2013, *Bold Tendencies*, London 2013 and *Art + Chips*, MOT Projects, London 2013. He has an upcoming show at Tintype in September called *Screaming Hornets*  
[nickbrooks.info](http://nickbrooks.info)

**David Burrows** has exhibited individual and collaborative work in galleries in the UK and abroad, including Chisenhale Gallery London, Arts Space Sidney, Mori Art Museum Tokyo, Frederieke Taylor Gallery New York and Galerie Praz-Delavallade Paris. Since 2005 he has worked with Simon O'Sullivan and others to produce the collaboration *plastique fantastique*. In 2003 he received a Paul Hamlyn Visual Artists Award.  
[imagemucistext.com](http://imagemucistext.com)  
[www.plastiquefantastique.org](http://www.plastiquefantastique.org)

**Ami Clarke's** practice facilitates the running of *Banner Repeater* - a reading room dedicated to artists publishing with an onsite public Archive of Artists Publishing, and experimental project space, on a working train station platform at Hackney Downs overground station, London, opening up an experimental space for others - whilst dually sharing the goal in her practice to explore ideas that come of publishing, distribution, and dissemination: how the performance of language increasingly impacts upon daily life. She has recently exhibited/curated/presented works at David Roberts Arts Foundation, Camden Arts Centre, Wysing Arts Centre, and had a solo exhibition in Tokyo, Japan. She continues to commission new artists/writers works through the *Banner Repeater* platform, and several publishing imprints: *Banner Repeater* paperbacks, *Banner Repeater* publishing, and the UN-PUBLISH series. She teaches across the UK with a focus on Publishing, Distribution and Dissemination: post-digital art production.  
[www.amiclarke.com](http://www.amiclarke.com)  
[www.bannerrepeater.org](http://www.bannerrepeater.org)

# LIMBO

Substation Project Space and Studios  
Bilton Square (off the High Street) Margate CT9 1EE  
Company Limited by Guarantee No: 04767417  
Registered in England.

+44 (0)7812 780 984  
[www.limboarts.co.uk](http://www.limboarts.co.uk)  
[info@limboarts.co.uk](mailto:info@limboarts.co.uk)



**Catriona Clayson** (b. 1977) works with drawing, print and photography. Lives in Whitstable. Studied at UCA Canterbury.

**Matt Copson** (b. 1992, Oxford, lives and works in London) graduated from the Slade School of Fine Art in 2014. Forthcoming exhibitions include Bloomberg New Contemporaries at The World Museum for the Liverpool Biennial and The ICA. He is a co-editor of art publication *Da Thirst*.

[www.mattcopson.com](http://www.mattcopson.com)

**Benedict Drew** (born 1977, Aus) studied at the Slade School of Fine Art (MFA) and Middlesex University (BA). Recent exhibitions include *Heads May Roll*, Matt's Gallery, London, 2014; *TTTT*, Jerwood Space, London, 2014, *Worlds in Collision*: Adelaide International 2014, *The Onesie Cycle*, Rhubaba, Edinburgh, 2013 and **This is Feedback**, Outpost, Norwich, 2012. He was shortlisted for the Jarman award in 2012.

[benedictdrew.com](http://benedictdrew.com)

**Vera Karlsson** (b. 1990) works with video, text, sound, installation, and other collage forms and fragmentations. Graduated from the BFA at the Slade School of Fine Art 2014. Recent and forthcoming screenings and exhibitions include Frankfurt Film Festival and Indo Bar, 133 Whitechapel Road, London

**Rebecca Lennon** (b. 1981, Manchester) studied Sheffield Hallam (BA) and Slade School of Fine Art (MA). Solo exhibitions include *Don't let It End This way, Tell Them I Said Something*, Bloc Projects, Sheffield, 2012; *We are Stuck Here Together*, Ceri Hand Gallery, Liverpool, 2010; *Since they got rid of time*, Galerie Metro, Berlin, Germany, 2008. Group exhibitions, screenings and performances include *Transitio\_MX Festival*, Mexico City, Mexico, 2013; *Fresh Trauma*, Ceri Hand Gallery, London, UK, 2013; *Tourist Information Centre*, Supercollider, Blackpool, UK, 2013; *We Object!*, Aid&Abet, Cambridge, UK, 2013; *The Hand That Holds the Desert Down*, Edinburgh Modern Film School, Edinburgh, UK, 2013; *The History of the Zero*, Art 13 performances, London, UK, 2013

[rebeccalennon.co.uk](http://rebeccalennon.co.uk)

**Terence McCormack** (b. 1978, Liverpool) studied at the Slade School of Art and Chelsea College of Art & Design. Recent projects include *Locomotion Film Festival*, London, 2014. Recent Exhibitions include *Golden Age Problems*, *Wellbeing in the Entertainment Complex*, Auto Italia, London, 2014. *Dimmer*, Locomotion, London 2013. *Members Show 2012*, selected by Ruth Ewan, Outpost, Norwich, 2012.

**Heather Phillipson** (b. 1978, London) studied at Central St Martins and Middlesex University. Recent solo exhibitions include *Bunker259*, New York, 2014; *Dundee Contemporary Arts*, Dundee, 2014; *Grundy Art Gallery*, Blackpool, 2014; *BALTIC Centre for Contemporary Art*, Gateshead, 2013 and *Zabludowicz Collection*, London, 2013. Recent events include Tate Britain, the ICA, Serpentine, London and Palais de Tokyo, Paris (all 2014). She is also an award-winning poet and was a LUX Associate Artist in 2012.

[heatherphillipson.co.uk](http://heatherphillipson.co.uk)

**Laura Smith** is a London based painter. She completed her MFA at The Slade School of Fine Art in 2012, winning the Clare Winsten Memorial Award. Recent and forthcoming shows include: *Continuum of Ceaseless Change* - APT Gallery, London, September/October 2014; *Summer Exhibition* - Royal Academy of Arts, London, 2014; *Art Athena 2014* - Lubomirov-Easton, Athens, Greece, 2014; *Passport to Pimlico*, Churchill Hall, London, 2014; *Small is Beautiful XXXI* - Flowers Gallery Kingsland Road, 2014.

[laura-smith.com](http://laura-smith.com)

**Milo Waterfield** (born 1974, UK) has been working as an Animation Director since 1999, first at comedy production company Zeppotron then as a freelancer - making shorts for MTV, Nickelodeon, E4 etcetera. He went on to complete an MA in Animation at the Royal College of Art in 2005. His short films have been screened widely at international film and animation festivals. He now divides his time between animating and working as a chef.

[sevenzeds.com](http://sevenzeds.com)

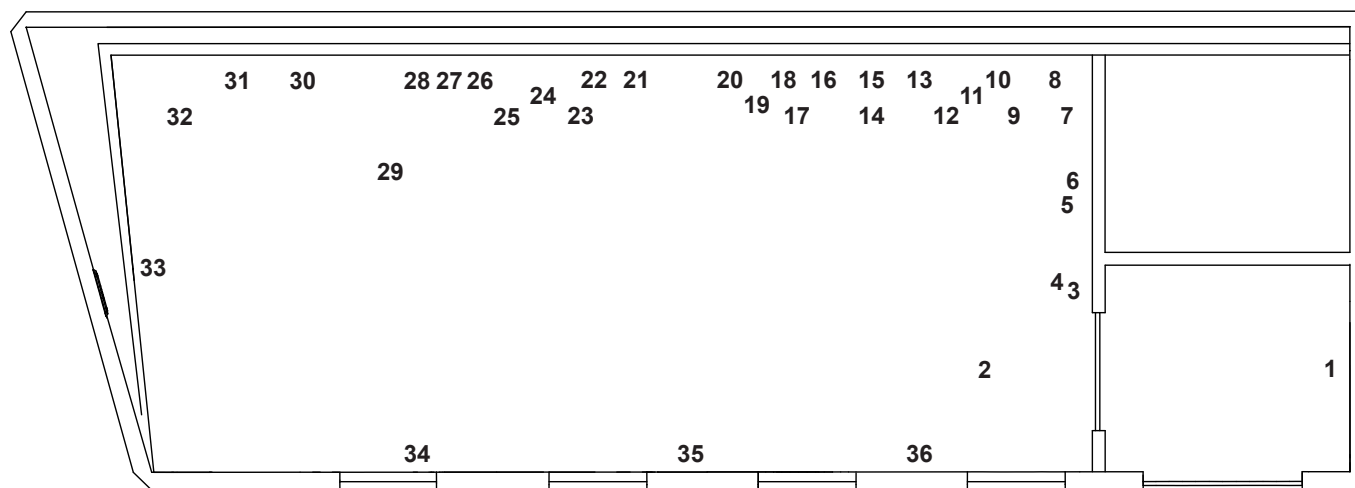


Supported using public funding by

**ARTS COUNCIL  
ENGLAND**



# ESCAPE ROUTES - LIST OF WORKS



1. **Milo Waterfield**  
*Nightcap*  
Animation, 2min 55, 2013
2. **Ami Clarke**  
*Data Pool 3*  
HD video, 2mins 10, 2012
3. **Catriona Clayson**  
*one, two*  
Screen prints, 2014
4. **Laura Smith**  
*Brick*  
Oil on aluminium, 2012
5. **Benedict Drew**  
*Psychopomp*  
Inkjet print, 2012
6. **Nicholas Brooks**  
*Island Cultures #7*  
Inkjet print and watercolour on canvas, 2014
7. **Heather Phillipson**  
*TURNING HEAVY*  
Fleece blanket, wadding, cotton, timber, steel pipe, marker pen, 2014
8. **David Burrows**  
*Attain in totality and Save! (dot) pillsafe (dot) org*  
Glitter, acrylic paint on paper, 2014
9. **Benedict Drew**  
*Apoplectic (detail)*  
Inkjet print, 2013
10. **Benedict Drew**  
*U-70 (Haunted Monument Levitation Set)*  
Paintpen on glass, screws, plasterscine, 2014
11. **Catriona Clayson**  
*Photograph*  
Photograph, 2014
12. **Terence McCormack**  
*Zip*  
Zip, ink, paint, 2014
13. **Laura Smith**  
*Knife*  
Oil on aluminium, 2011
14. **Benedict Drew**  
*Verbs Not Nouns*  
Screenprint 2012
15. **Angus Braithwaite**  
*Quercus robur: Father of the Woods*  
Digital print framed in the wood depicted, 2014
16. **Angus Braithwaite**  
*Fraxinus excelsior: World Tree*  
Digital print framed in the wood depicted, 2014
17. **Terence McCormack**  
*Zip*  
Zip, ink, paint, 2014
18. **Benedict Drew**  
*No Body*  
C-type print on aluminium, 2014
19. **Benedict Drew**  
*Diemotherfuckerdie*  
Inkjet print, 2014
20. **Nicholas Brooks**  
*Island Cultures # 4*  
Inkjet print and watercolour on canvas, 2014
21. **Benedict Drew**  
*Big Shit*  
Inkjet print, 2013
22. **Benedict Drew**  
*Little Shit*  
Inkjet print, 2013
23. **David Burrows**  
*HELLO. Transaction cannot be completed due*  
Glitter, acrylic paint on paper, 2014
24. **Terence McCormack**  
*Zip*  
Zip, ink, paint, 2014
25. **Angus Braithwaite**  
*Acer pseudoplanatus: Death Maple*  
Digital print framed in the wood depicted, 2014.
26. **Terence McCormack**  
*BL 03, VAIO Fit 15 (usb cable, Statistical Physics ed.2, locker key, iPhone 5)*  
Silver gelatin print 30.5 x 40.6 x 0.5, 2014
27. **Terence McCormack**  
*BL 04 (Locker key, MacBook charger, A4 clear plastic punch pocket, wallet)*  
Silver gelatin print 30.5 x 40.6 x 0.5, 2014
28. **Terence McCormack**  
*BL 01 (MacBook Air and charger, notebook, usb stick, Samsung Galaxy S4)*  
Silver gelatin print 30.5 x 40.6 x 0.5, 2014
29. **Benedict Drew**  
*Jazzmag*  
Magazine 2013
30. **Rebecca Lennon**  
*FOIE GRAS*  
4 x A0 Photocopies, 2014
31. **David Burrows**  
*FREE, LIVE and UN-F\*CKING BELIEVABLE!*  
Glitter, acrylic paint on paper, 2014
32. **Benedict Drew**  
*The Concha Institute Poster*  
Poster, 2013
33. **Matt Copson**  
*Reynard in Limbo*  
Video projection onto wall mural, fake fur, 2014
34. **Benedict Drew**  
*Apoplectic (detail)*  
Inkjet print, 2013
35. **Vera Karlsson**  
*Catfish*  
Single channel video, (16 mins) 2014
36. **Benedict Drew**  
*Dramatic Arc*  
Screenprint on aluminium, 2013