

JESSICA SARAH RINLAND

Dissecting the Exploding Whale

Limbo, Substation Project Space, 2 Bilton Square, Margate CT9 1EE
5-27 October 2013, Fri-Sun 12-5pm | Preview 4 October 6-9pm

LIMBO is pleased to present a new exhibition by Jessica Sarah Rinland. Rinland's work investigates and unifies opposing themes, drawing equally from her background in fine art and film production. Her films, writings and installations interweave found and original material, highlighting the incongruity of factual accounts, or presenting fiction in documentary form.

In 2011 she encountered a stranded whale on the shores of Pegwell Bay, Kent. Struck by the immensity of the mammal, the spectacle that it created, and the scientists that were performing the visible necropsy, she began to investigate the reasons why they strand. The elusive truth behind the behaviour of these creatures, difficult to discern through theories that often seem as outlandish as folk law, has become the subject of her current body of work.

This exhibition at LIMBO consists of two rooms containing a series of film works, slide projections and sound recordings. The first room investigates the phenomenon of whale strandings and the second, the culture of whaling. The rooms operate in synchrony, aiming to create a filmic sense of time and sequence for the viewer navigating the gallery space.

Jessica Sarah Rinland graduated in Fine Art from Central St Martins, having also spent a semester of Film Production at Tisch, NYU. Her film *Nulepsy* screened and exhibited nationally and internationally including: Bloomberg New Contemporaries, New York Film Festival, London Film Festival, International Film Festival Rotterdam, Ann Arbor Film Festival, broadcast by Canal+ and BAFTA long listed.

She was Virtue and Industry filmmaker in residence at Picture This, Bristol in 2010 and has attended the Berlin Talent Campus and Locarno Filmmakers Academy.

Most recently her film *Electric Oil* won ICA's Best Experimental Film at London Short Film Festival 2013.

The artist wishes to thank:

Analia + Sergio
Mark Carnall
John Burton

Lizzy Rose
Matthew Perkins
Tam Hare

Matthew de Pulford
Paul Hazelton
Pablo + Leo

LIMBO



Substation Project Space and Studios
Bilton Square (off the High Street) Margate CT9 1EE
Company Limited by Guarantee No: 04767417
Registered in England.

+44 (0)7812 780 984
www.limboarts.co.uk
info@limboarts.co.uk



Supported by:



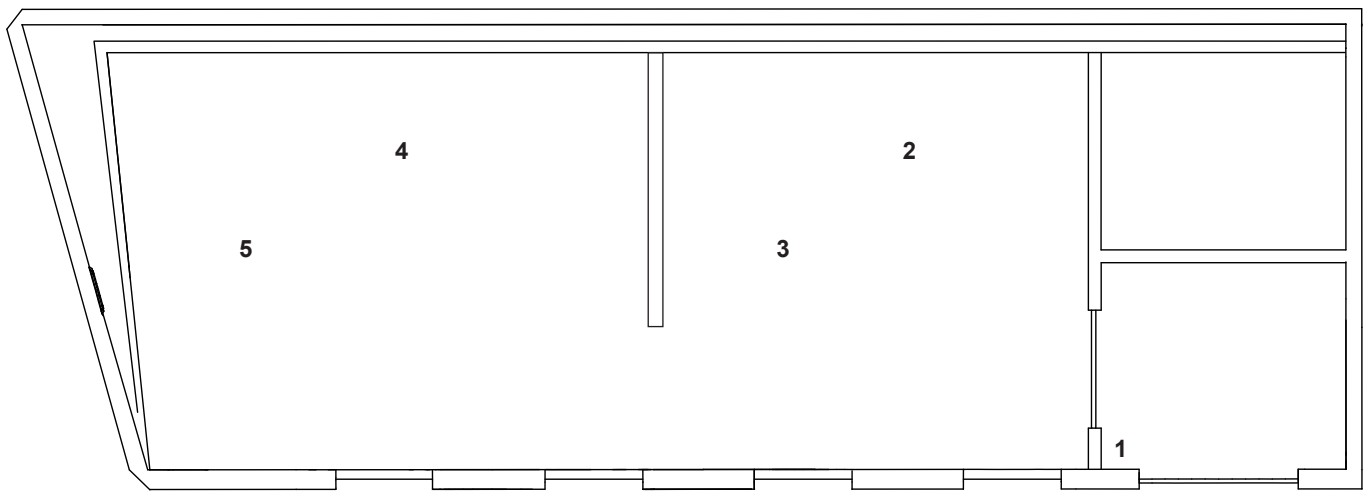
LOTTERY FUNDED



Supported using public funding by
**ARTS COUNCIL
ENGLAND**



LIST OF WORKS
All works - Jessica Sarah Rinland



1. *Exploding Whales, A Dissection*
Book, 2013

2. *Pegwell Bay, Kent – Recollection of a Whale*
Super 8 to HD transfer, 2013

3. *Pathology Unit*
35mm Slides, 2013

4. *A Boiled Skeleton*
(read by ex-whaler John Burton)
35mm Slides, 2013

5. *Description of a Struggle*
HD, 2012