

KATE HAWKINS

Escape the Esplanade

Limbo, Substation Project Space, 2 Bilton Square, Margate CT9 1EE
27 July – 18 August 2013, Fri-Sun 12-5pm | Preview 26 July 6-9pm

LIMBO is pleased to present an exhibition of new works by Kate Hawkins.

Escape the Esplanade addresses the dichotomy between the spectacle and the spectator, by positioning a set of works in a manner that alludes to the composition of the nearby High Street, forming a central path through which the viewer must navigate, 'overlooked' by 'bystanding' paintings and structures.

Much of Kate Hawkins' work draws from the discourse that surrounds performance and theatre. Her previous performance-based practice notably informs her more recent work. For *Escape The Esplanade* Kate makes paintings as a means to de-activate the performer/viewer paradigm, thereby encouraging the spectator to adopt the role of performer. The viewer is persuaded to partake in active engagement with the work, and, in doing so, enact a parallel performance of sorts.

Escape the Esplanade is both an invitation for participation from the viewer and a response to the structure of the Limbo project space. The length and shape of the space lends itself to a practical act of walking-through, an act that is similarly directed by the structure of a street, catwalk or pier. The paintings reference street-style blog images, but here the label 'street style' takes on dual meaning where both the spectator and artwork can be viewed as potential 'performing' subjects. This shift in viewing positions serves to highlight the act of looking which is further played out through the use of motifs such as lenses and lengthy eyelashes.

Situated behind Margate's High Street, Limbo is comparatively 'backstage'. In engineering this conflation of spectacle and spectator, Hawkins offers a reflection of the 'front stage' while retaining an honesty about backstage mechanics and processes of display.

Kate Hawkins lives and works in London. She studied at Edinburgh University and the Slade and is currently completing a practice-based PhD at Winchester School of Art on whether painting can be performative without becoming theatrical and what this means for spectatorship. She will this year also exhibit in Bloomberg New Contemporaries, selected by Chantal Joffe, Ryan Gander, and Nathaniel Mellors. Recent exhibitions include the London Art Fair (for Gallery Vela) 2-person show, 2013; *The King of Hearts Has No Moustache*, a solo exhibition at Gallery Vela, London, 2012; and *My Brother is a Hairy Man*, with James Ferris, at George Polke, London, 2011.

www.katehawkins.co.uk

LIMBO

Substation Project Space and Studios
Bilton Square (off the High Street) Margate CT9 1EE
Company Limited by Guarantee No: 04767417
Registered in England.

+44 (0)7812 780 984
www.limboarts.co.uk
info@limboarts.co.uk



LOTTERY FUNDED

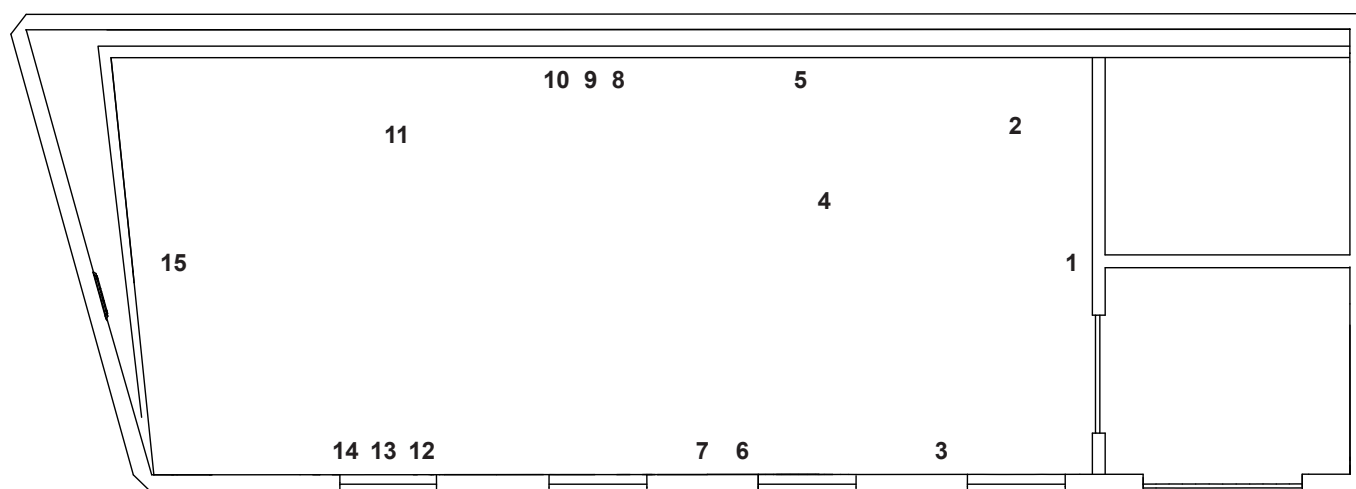


Supported using public funding by

**ARTS COUNCIL
ENGLAND**



LIST OF WORKS
All works - Kate Hawkins 2013



1. Black Tie Black Eye
 Oil on canvas, wooden stretchers

2. Mary
 Oil on canvas, powder coated steel.

3. The Unnamable
 Oil on canvas

4. Blue and Beheaded
 Powder coated valet stand

5. Heavy
 Oil and canvas, hinge

6. European
 Oil on canvas, European walnut kitchen worktop

7. Owl
 Oil on canvas

8. Squiggle
 Oil on canvas, powder coated coat hook

9. Being Seeing
 Oil on canvas, planed & varnished European walnut timber

10. Eloise
 Oil on canvas

11. Both Eyes
 Oil on canvas, painted wooden clotheshorse

12. Roman Sun I
 Oil on canvas, painted shelf

13. Roman Sun III
 Oil on canvas, painted shelf

14. Roman Sun II
 Oil on canvas, painted shelf

15. Deckchairs
 Be Your Self or Someone Else wallpaper.